



SGP30N60

Hersteller-Teilenummer: SGP30N60

Hersteller / Marke: Original

Teil der Beschreibung: SGP30N60 Original

RoHs Status:

Lagerzustand: New original, 3686 pcs Stock Available.

Liefern von: Hong Kong

Versandweg: DHL/Fedex/TNT/UPS/EMS

Image may be representation.
See specs for product details.

Spezifikationen

| | |
|----------------|---|
| Teilenummer | SGP30N60 |
| Hersteller | Original |
| Beschreibung | SGP30N60 Original |
| Kategorie | Integrierte Schaltungen (ICs) > Specialized Hot ICs |
| Teilstatus | 3686 pcs Stock |
| Serie | - |
| RoHs Status | Lead free / RoHS Compliant |
| Bedingung | New Original Stock |
| Garantie | 100% Perfect Functions |
| Vorlaufzeit | 2-3days after payment. |
| Zahlung | PayPal / Telegraphic Transfer / Western Union |
| Versand per | DHL / Fedex / UPS |
| Hafen | HongKong |
| Anfrage-E-Mail | Info@YIC-Electronics.com |

Sie können auch interessiert

sein:



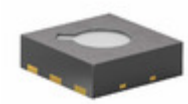
SGP23N60UFTU
AMI Semiconductor / ON
Semiconductor
IGBT 600V 23A 100W TO220-3



SGP30N60HSXKSA1
International Rectifier (Infineon
Technologies)
IGBT 600V 41A 250W TO220-3



SGP23N60UFDTU
Fairchild/ON Semiconductor
IGBT 600V 23A 100W TO220



SGP30-2.5K
Sensirion
AIR QUALITY GAS SENSOR FOR
VOC'S



SGP400DZ
FAI
FAI DIP8



SGP3D01-LF
SAMSUNG
SGP3D01-LF SAMSUNG



SGP23N60UFTU
Fairchild/ON Semiconductor
IGBT 600V 23A 100W TO220-3



SGP23N60UFDTU
AMI Semiconductor / ON
Semiconductor
IGBT 600V 23A 100W TO220

heiße Teile

Mehr

| | | | | |
|----------------------|--------------------|-------------------|-----------------|---------------------|
| ⚙ 6MBP25RJ120 | ⚙ A3942KLGTR-T | ➔ AT49BV040A-70JU | D BD3941HFP-TR | ➔ CY2280PVC-1T |
| ⊖ GCM0335C1H470JA16D | ⚙ LL1608-FH6N8J | D LM26400MH | ➔ LP0701N3 | ➔ LS4148ST |
| ⚙ M52342FP | ⊖ N600DH12 | ⚙ PE25FG120 | ⚙ POC-SP41AF | ➔ PT7M8206B18ZEE |
| D R0809LS08C | ⚙ R5323Z022B-TR-FD | ⊖ R5F213G4DN600SP | ⚙ RB162MM-40 | ➔ RN73H2ATTD2001B25 |
| ➔ SGP02N120 | ⚙ SGP06N60 | ⚙ SGP10N60 | ⊖ SGP10N60A | ➔ SGP10N60RUFDTU |
| ⚙ SGP10N60RUFDTU | ➔ SGP10N60RUFDTU | D SGP13N60UFD | ⚙ SGP13N60UFDTU | ⊖ SGP13N60UFDTU |
| ⚙ SGP15N120 | D SGP20N60 | ➔ SGP20N60HS | ⚙ SGP23N60UF | ➔ SGP23N60UFTU |
| ⊖ SGP23N60UFTU | ⚙ SGP30N60HS | ⚙ SGP40N60UF | ➔ SGP5N60RUFDTU | ➔ SGP5N60RUFDTU |
| ⚙ SGP5N60RUFDTU | ⊖ SGP6N60UFDTU | ⚙ SGP6N60UFDTU | D SKM200GM128D | ➔ SKY13270-92LF |
| ⚙ SN74AC16244DLR | ⚙ TPSMA16HE3/61T | ⊖ V375A15C600B3 | ⚙ W.FL-LP-N | ➔ W986432DH-6 |

Contact us: Info@YIC-Electronics.com

ADD: Einheit A5-B5 Nr. 509, 5 / F Sing Win Fabrikgebäude, 15-17 Shing Yip St., Kwun Tong, Kowloon, HongKong.

Copyright © 2018 YIC-Electronics.com - YIC internationale Co., begrenzt