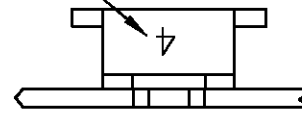


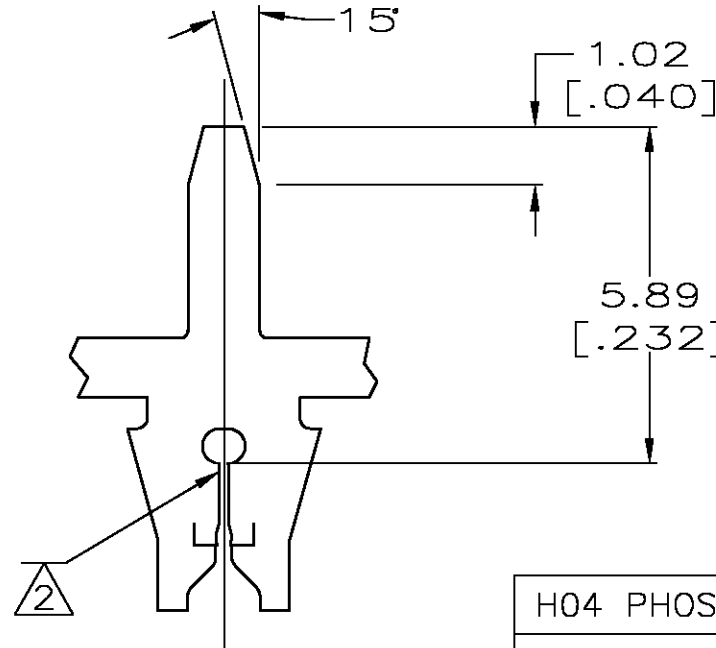
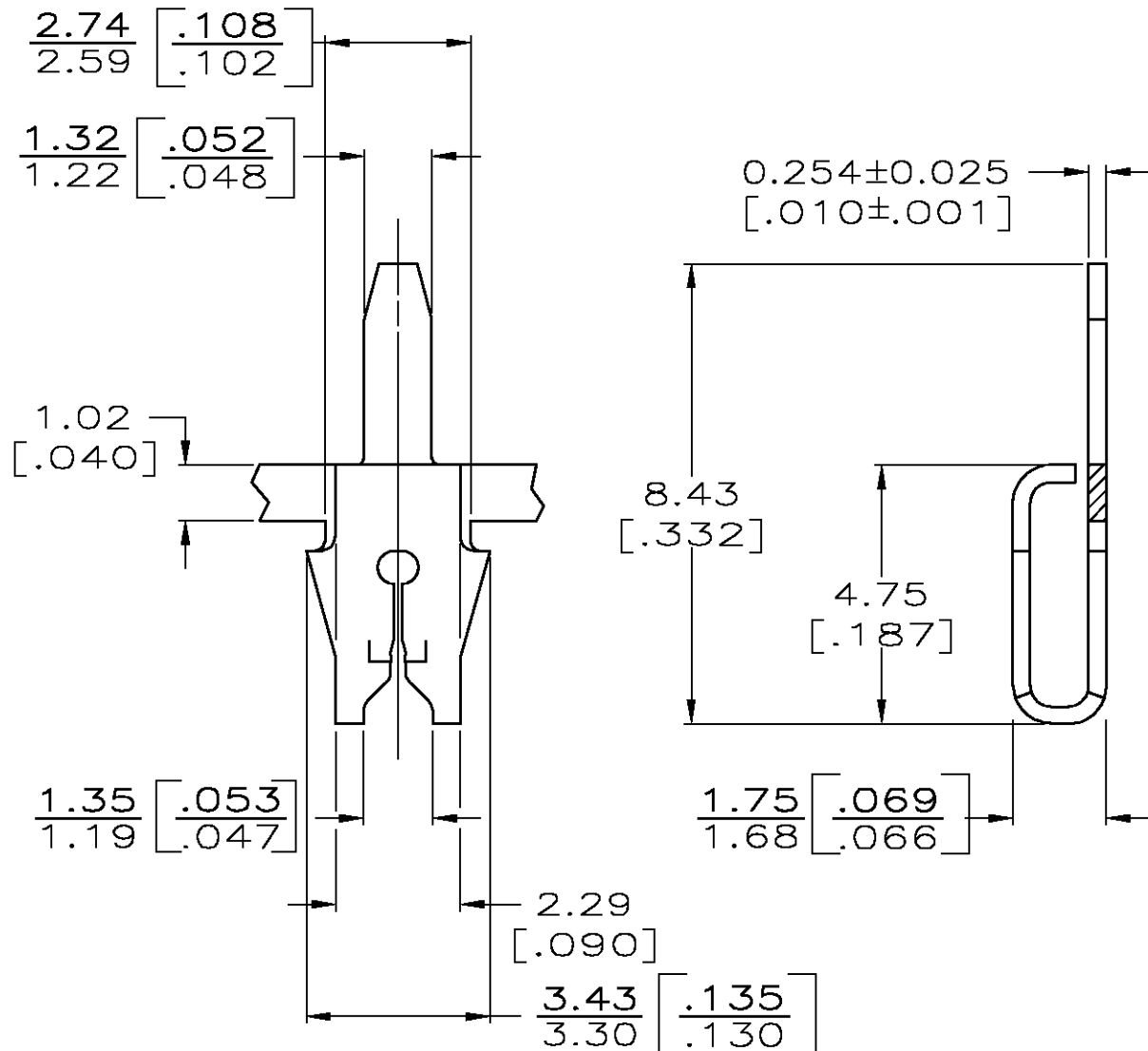
THIS DRAWING IS UNPUBLISHED. RELEASED FOR PUBLICATION  
 © COPYRIGHT BY TYCO ELECTRONICS CORPORATION. ALL RIGHTS RESERVED.

| LOC | DIST | REVISIONS   |                          |         |       |
|-----|------|-------------|--------------------------|---------|-------|
| P   | LTR  | DESCRIPTION | DATE                     | DWN     | APVD  |
| AF  | 50   | G           | REVISED PER 0G3A-0057-03 | 24JAN03 | MF KR |

IDENTIFICATION NUMBER 4 FOR MAGNET WIRE RANGE



- 1 CONTINUOUS STRIP ON REELS WITH TERMINALS LOCATED ON 5.08±0.08 [.200±.003] CENTERS.
- 2 SLOT ACCEPTS 0.18-0.23mm DIA [#33-#31]AWG COPPER MAGNET WIRE
- 3 0.002032[.000080] MIN TIN OVER 0.00127[.000050] MIN NICKEL
- 4 REELED FOR APPLICATION THROUGH MAG-MATE INSERTION MACHINE.
- 5 REELED FOR INSERTION INTO PRINTED CIRCUIT BOARD.
- 6 PRELIMINARY - NOT FOR PRODUCTION.



|                     |         |             |         |
|---------------------|---------|-------------|---------|
| H04 PHOSPHOR BRONZE | 4       | 6           | 62938-3 |
| H04 BRASS           |         | 5           | 62938-2 |
| H04 BRASS           | 4       |             | 62938-1 |
| MATERIAL            | REELING | PART NUMBER |         |

THIS DRAWING IS A CONTROLLED DOCUMENT.

|                  |           |   |                              |           |
|------------------|-----------|---|------------------------------|-----------|
| DWN              | 24JAN2003 | <b>tyco</b><br>Electronics                | Tyco Electronics Corporation |           |
| CHK              | 24JAN2003 |   | Harrisburg, PA 17105-3608    |           |
| APVD             | 24JAN2003 | NAME                                      |                              |           |
| KURT A. RANDOLPH |           | TERMINAL, POSTED,<br>187 SERIES MAG-MATE™ |                              |           |
| KURT A. RANDOLPH |           | -   |                              |           |
| PRODUCT SPEC     |           | 108-2012                                  | SIZE                         | CAGE CODE |
| APPLICATION SPEC |           | 114-2069                                  | A3                           | 00779     |
| MATERIAL         |           | SEE TABLE                                 | DRAWING NO                   | 62938     |
| FINISH           |           | - 3                                       | RESTRICTED TO                | -         |
| CUSTOMER DRAWING |           |   | SCALE                        | 8:1       |
|                  |           |   | SHEET                        | 1 OF 1    |
|                  |           |   | REV                          | G         |