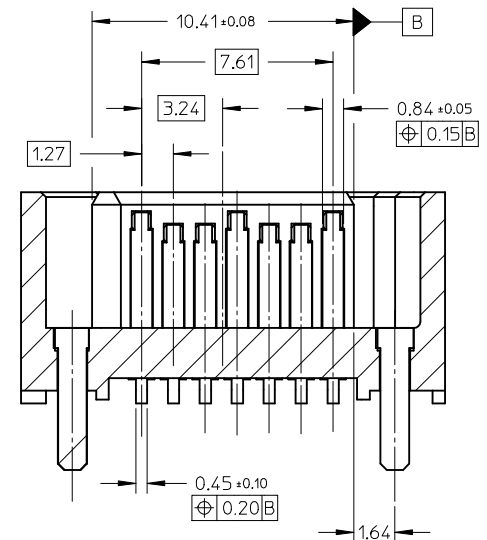
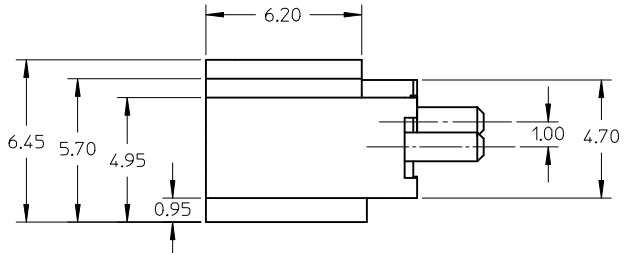
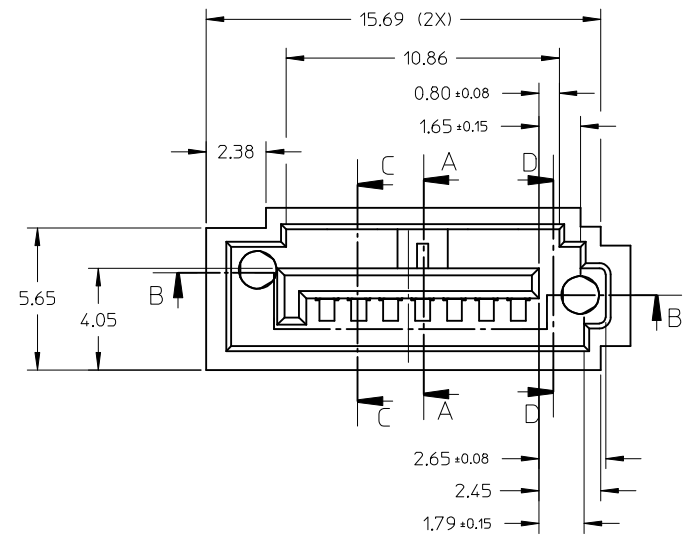
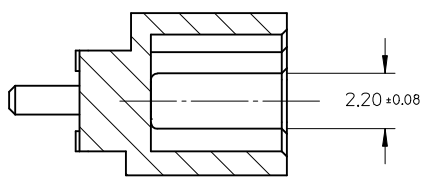


SECTION C-C



SECTION B-B



SECTION D-D

<b>ADD NEW PART</b> EC NO: SH2015-0307 TDRWNG: GLLI CHKD: APPR: AYIN REV:	2014/10/30 2015/03/16	<b>QUALITY SYMBOLS</b> $F_A = 0$ $F_B = 0$ $F_C = 0$	<b>GENERAL TOLERANCES (UNLESS SPECIFIED)</b>		<b>DIMENSION STYLE</b> MM ONLY	<b>SCALE</b> 5:1	<b>DESIGN UNITS</b> METRIC	THIRD ANGLE PROJECTION	
	DESCRIPTION		mm    INCH	DRAWN BY GLLI	DATE 2014/10/30	<b>TITLE</b> HIGH SPEED CONNECTOR 1.27MM PITCH VERTICAL SMT SOLDER TAIL			
	4 PLACES ± --- ± --- 3 PLACES ± --- ± --- 2 PLACES ± 0.15 ± --- 1 PLACE ± 0.25 ± --- 0 PLACE ± --- ± ---		ANGULAR ± 3 ° DRAFT WHERE APPLICABLE MUST REMAIN WITHIN DIMENSIONS	APPROVED BY AYIN	DATE 2015/03/16	<b>molex</b>			
	SEE SHEET 2		MATERIAL NO.	DOCUMENT NO. SD-47306-001	SHEET NO. 1 OF 2	THIS DRAWING CONTAINS INFORMATION THAT IS PROPRIETARY TO MOLEX INCORPORATED AND SHOULD NOT BE USED WITHOUT WRITTEN PERMISSION			

10 9 8 7 6 5 4 3 2 1

NOTES:

1. MATERIAL:

HOUSING: HIGH TEMPERATURE THERMAL PLASTIC, GLASS FILLED,  
UL94V-0, COLOR: BLACK

TERMINAL: BRASS

POST: BRASS

2. TERMINAL PLATING:

CONTACT AREA: (a) GOLD FLASH

(b) GOLD, THICKNESS=0.76 MICRON MINIMUM

(c) GOLD, THICKNESS=0.38 MICRON MINIMUM

SOLDER TAIL: TIN, THICKNESS=1.27 MICRON MINIMUM

UNDER PLATE: NICKEL, THICKNESS=1.27 MICRON MINIMUM

3. POST PLATING: UNDER PLATE: NICKEL, THICKNESS=1.25 MICRON MINIMUM

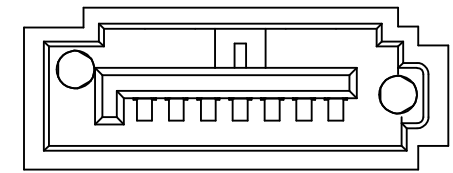
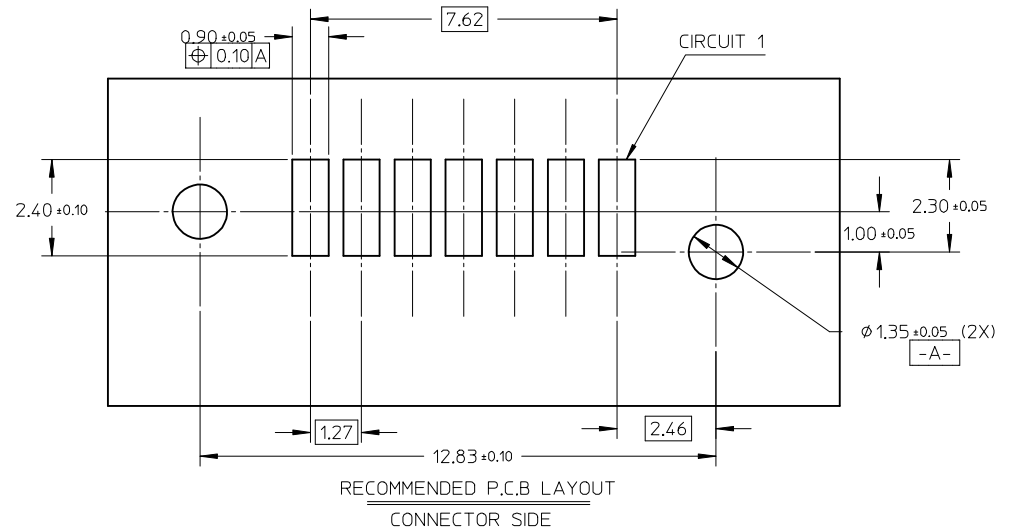
TIN, THICKNESS=1.9 MICRON MINIMUM OVER ALL

4. PACKAGING: TAPE REEL

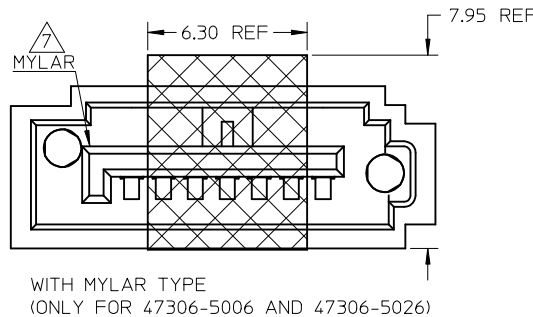
5. PRODUCT SPECIFICATION REFER TO PS-67491-001

6. RECOMMENDED SOLDERING PROCESS: IR PROCESS

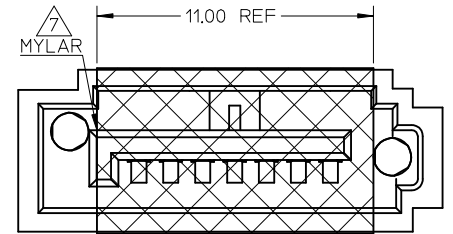
7. THE MYLAR STICKED ON THE HOUSING IS JUST USED FOR PICK-UP PLACE.  
PLEASE REMOVE IT AFTER REFLOW



WITHOUT MYLAR TYPE



WITH MYLAR TYPE  
(ONLY FOR 47306-5006 AND 47306-5026)

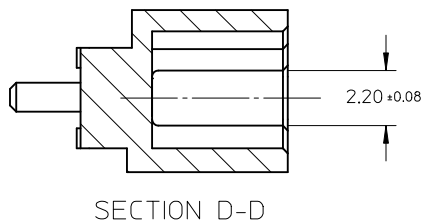
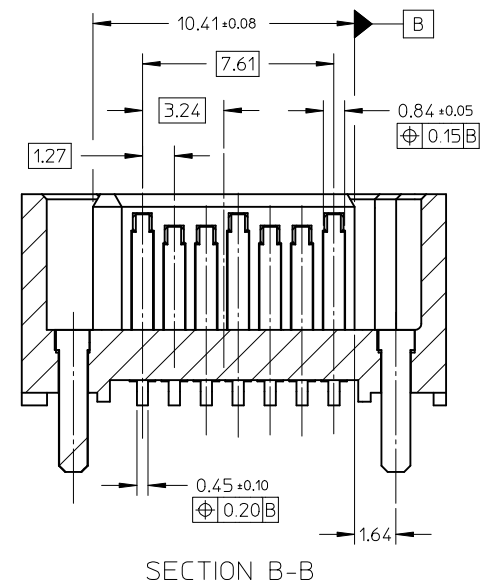
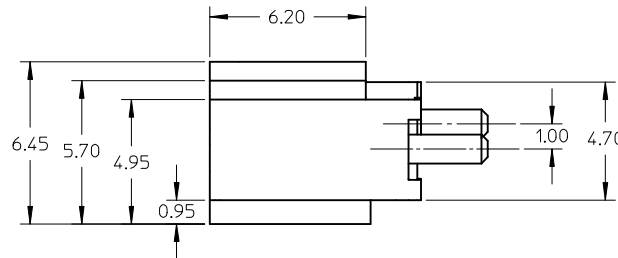
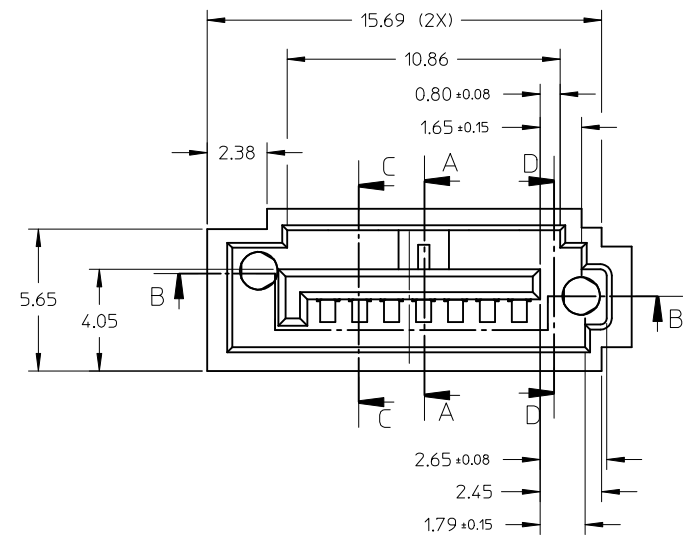
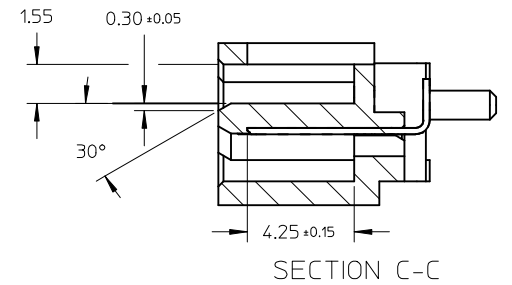
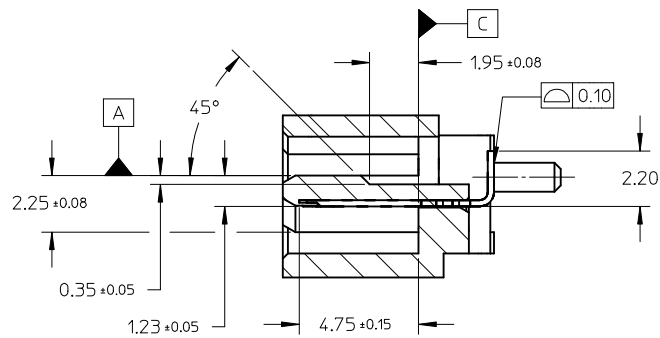
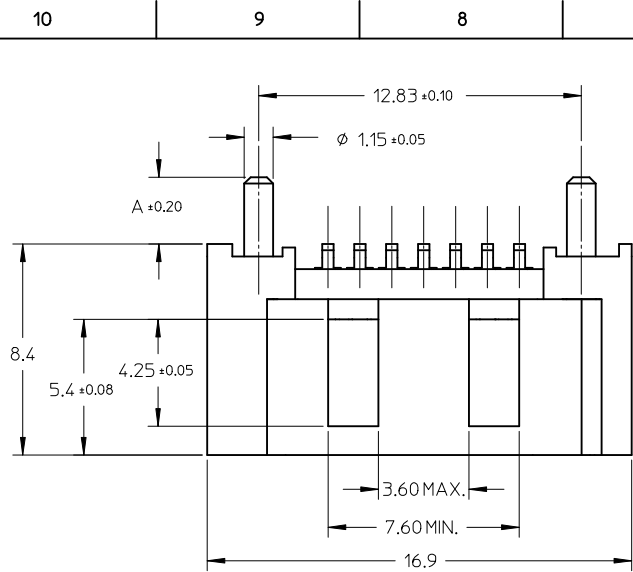


WITH MYLAR TYPE

473065033	SEE NOTE2(b)	2.65	WITH	PK-47306-001	NATURAL
473065013	SEE NOTE2(b)	2.65	WITH	PK-47306-001	BLUE
473062105	SEE NOTE2(c)	2.65	WITHOUT	PK-47306-002	
473062102	SEE NOTE2(b)				
473062101	SEE NOTE2(a)	3.45	WITH	PK-47306-001	BLACK
473065026	SEE NOTE2(c)				
473065025	SEE NOTE2(c)				
473065022	SEE NOTE2(b)				
473065021	SEE NOTE2(a)				
473065015	SEE NOTE2(c)	3.05	WITH	PK-47306-001	BLACK
473065012	SEE NOTE2(b)				
473065011	SEE NOTE2(a)				
473065005	SEE NOTE2(c)	2.65	WITHOUT	PK-47306-001	BLACK
473065006	SEE NOTE2(c)				
473065002	SEE NOTE2(b)				
473065001	SEE NOTE2(a)	3.45	WITHOUT	PK-47306-001	BLACK
473062025	SEE NOTE2(c)				
473062022	SEE NOTE2(b)				
473062021	SEE NOTE2(a)				
473062015	SEE NOTE2(c)	3.05	WITHOUT	PK-47306-001	BLACK
473062012	SEE NOTE2(b)				
473062011	SEE NOTE2(a)				
473062005	SEE NOTE2(c)	2.65	WITHOUT	PK-47306-001	BLACK
473062002	SEE NOTE2(b)				
473062001	SEE NOTE2(a)				
MATERIAL NO	PLATING TYPE	DIM A	MYLAR		

SEE SHEET 1 EC NO: SH2015-0307 DRAWING: 2014/10/30 CHKD: APPR: AYIN 2015/03/16	QUALITY SYMBOLS	GENERAL TOLERANCES (UNLESS SPECIFIED)	DIMENSION STYLE	SCALE	DESIGN UNITS	THIRD ANGLE PROJECTION
	$\nabla F=0$ $\nabla E=0$ $\nabla D=0$	4 PLACES ± --- ± --- 3 PLACES ± --- ± --- 2 PLACES ± 0.15 ± --- 1 PLACE ± 0.25 ± --- 0 PLACE ± --- ± ---	MM ONLY	8:1	METRIC	
		ANGULAR ± 3 ° DRAFT WHERE APPLICABLE MUST REMAIN WITHIN DIMENSIONS	DRAWN BY: GLLI DATE: 2014/10/30 CHECKED BY: DATE: APPROVED BY: AYIN DATE: 2015/03/16 MATERIAL NO.	TITLE	HIGH SPEED CONNECTOR 1.27MM PITCH VERTICAL SMT SOLDER TAIL	
			SEE CHART THIS DRAWING CONTAINS INFORMATION THAT IS PROPRIETARY TO MOLEX INCORPORATED AND SHOULD NOT BE USED WITHOUT WRITTEN PERMISSION	DOCUMENT NO. SD-47306-001	SHEET NO. 2 OF 2	

9 8 7 6 5 4 3 2 1



<b>ADD PART NUMBER</b> EC NO: SH2010-0232 DRWN: XJ SONG CHKD: XJ SONG APPR: RZHANG	2010/01/07 2010/01/11 2010/01/14	<b>QUALITY SYMBOLS</b> ▽ = 0 ◻ = 0	<b>GENERAL TOLERANCES (UNLESS SPECIFIED)</b>		<b>DIMENSION STYLE</b> MM ONLY		SCALE 5:1	DESIGN UNITS METRIC	THIRD ANGLE PROJECTION		
	DESCRIPTION REV		4 PLACES ± --- ± --- 3 PLACES ± --- ± --- 2 PLACES ± 0.15 ± --- 1 PLACE ± 0.25 ± ---	mm INCH	DRAWN BY JENNY	DATE 2005/07/22	TITLE HIGH SPEED CONNECTOR 1.27MM PITCH VERTICAL SMT SOLDER TAIL				
			ANGULAR ± 1 °	DRAFT WHERE APPLICABLE MUST REMAIN WITHIN DIMENSIONS	CHECKED BY GRMA	DATE 2005/07/22	MOLEX INCORPORATED				
					APPROVED BY YAP	DATE 2005/07/22	MATERIAL NO. SEE SHEET 2	DOCUMENT NO. SD-47306-001	SHEET NO. 1 OF 2		

10 9 8 7 6 5 4 3 2 1

NOTES:

1. MATERIAL:

HOUSING: HIGH TEMPERATURE THERMAL PLASTIC, GLASS FILLED,  
UL94V-0, COLOR: BLACK

TERMINAL: BRASS

POST: BRASS

2. TERMINAL PLATING:

CONTACT AREA: (a) GOLD FLASH

(b) GOLD, THICKNESS=0.76 MICRON MINIMUM

(c) GOLD, THICKNESS=0.38 MICRON MINIMUM

SOLDER TAIL: TIN, THICKNESS=1.27 MICRON MINIMUM

UNDER PLATE: NICKEL, THICKNESS=1.27 MICRON MINIMUM

3. POST PLATING: UNDER PLATE: NICKEL, THICKNESS=1.25 MICRON MINIMUM

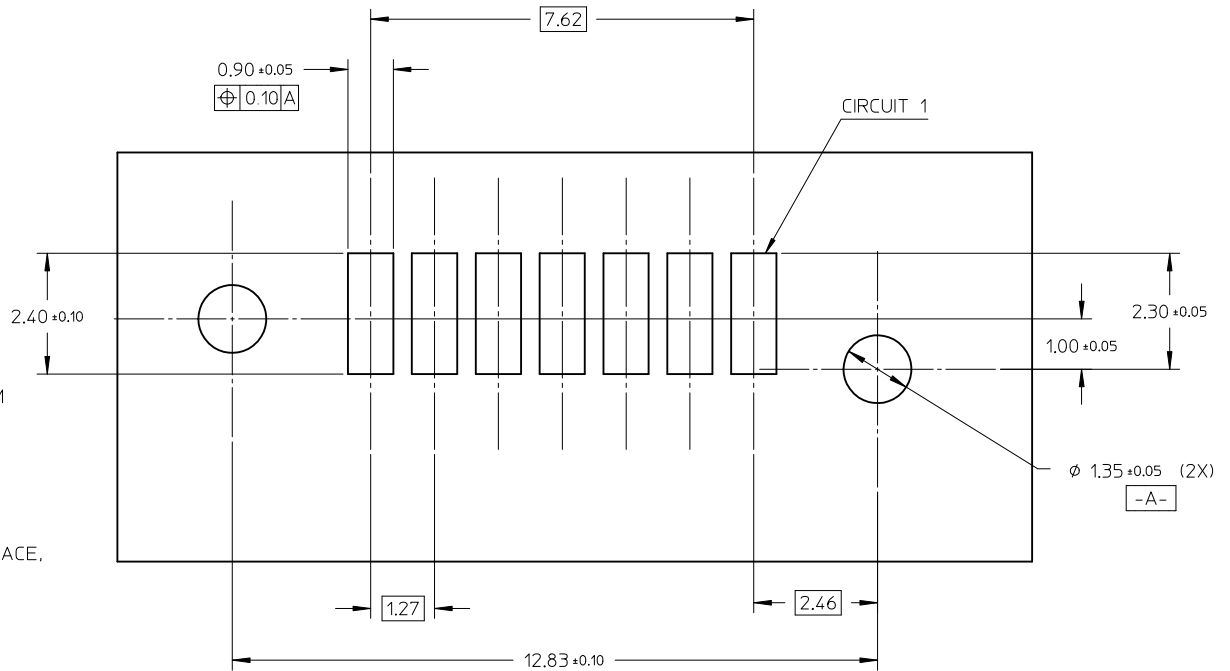
TIN, THICKNESS=1.9 MICRON MINIMUM OVER ALL

4. PACKAGING: TAPE REEL

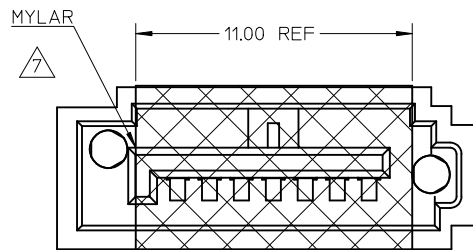
5. PRODUCT SPECIFICATION REFER TO PS-67491-001

6. RECOMMENDED SOLDERING PROCESS: IR PROCESS

△ THE MYLAR STICKED ON THE HOUSING IS JUST USED FOR PICK-UP PLACE,  
PLEASE REMOVE IT AFTER REFLOW

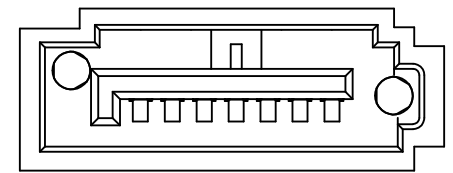


473062105	SEE NOTE2(c)	2.65	WITHOUT	PK-47306-002
473062102	SEE NOTE2(b)			
473062101	SEE NOTE2(a)			
473065025	SEE NOTE2(c)	3.45	WITH	PK-47306-001
473065022	SEE NOTE2(b)			
473065021	SEE NOTE2(a)			
473065015	SEE NOTE2(c)			
473065012	SEE NOTE2(b)			
473065011	SEE NOTE2(a)	3.05	WITH	PK-47306-001
473065005	SEE NOTE2(c)			
473065002	SEE NOTE2(b)	2.65	WITH	PK-47306-001
473065001	SEE NOTE2(a)			
473062025	SEE NOTE2(c)	3.45	WITHOUT	PK-47306-001
473062022	SEE NOTE2(b)			
473062021	SEE NOTE2(a)			
473062015	SEE NOTE2(c)			
473062012	SEE NOTE2(b)	3.05	WITHOUT	PK-47306-001
473062011	SEE NOTE2(a)			
473062005	SEE NOTE2(c)	2.65	WITHOUT	PK-47306-001
473062002	SEE NOTE2(b)			
473062001	SEE NOTE2(a)			
MATERIAL NO	PLATING TYPE	DIM A	MYLAR	PACKING



WITH MYLAR TYPE

RECOMMENDED P.C.B LAYOUT  
CONNECTOR SIDE



WITHOUT MYLAR TYPE

SEE SHEET1 EC NO: SH2010-0232 DRW: XJ.SONG 2010/01/07 CHKD: XJ.SONG 2010/01/11 APPR: RZHANG 2010/01/14	QUALITY SYMBOLS ▽=0 ∇=0	GENERAL TOLERANCES (UNLESS SPECIFIED)		DIMENSION STYLE MM ONLY		SCALE 5:1	DESIGN UNITS METRIC	THIRD ANGLE PROJECTION	
			mm	INCH	DRAWN BY JENNY	DATE 2005/07/22	TITLE HIGH SPEED CONNECTOR 1.27MM PITCH VERTICAL SMT SOLDER TAIL		
		4 PLACES	± ---	± ---	CHECKED BY GRMA	DATE 2005/07/22	MOLEX INCORPORATED		
		3 PLACES	± ---	± ---	APPROVED BY YAP	DATE 2005/07/22	DOCUMENT NO. SD-47306-001	SHEET NO. 2 OF 2	
			2 PLACES	± 0.15	± ---	THIS DRAWING CONTAINS INFORMATION THAT IS PROPRIETARY TO MOLEX INCORPORATED AND SHOULD NOT BE USED WITHOUT WRITTEN PERMISSION			
			1 PLACE	± 0.25	± ---				
			ANGULAR ± 1 °						
			DRAFT WHERE APPLICABLE MUST REMAIN WITHIN DIMENSIONS						

9 8 7 6 5 4 3 2 1