

# SURFBOARDS®



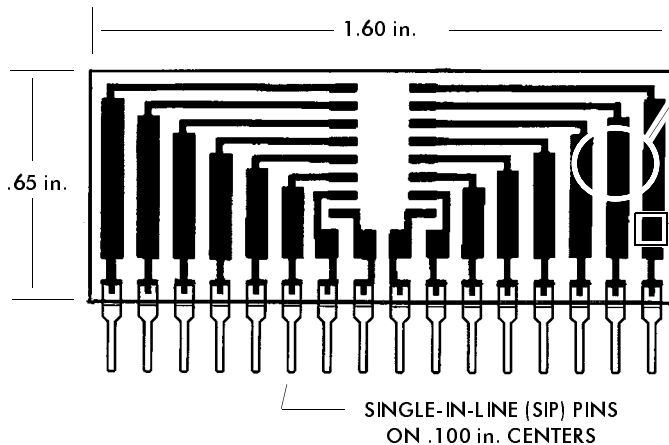
THE BREADBOARDING MEDIUM FOR SURFACE MOUNT™

## 9000 SERIES FOR I.C.s

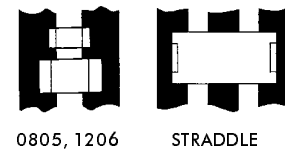
IDS9163A 3-9-99

MODEL **9163**

ACCEPTS ONE 14 OR 16-PIN S.O.I.C.  
OR TWO 8-PIN SOICs  
DIRECT PIN OUT OR ADD ADDITIONAL COMPONENTS



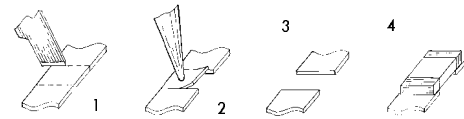
I.C. pins fan out to peripheral part mounting areas capable of accepting several surface mount devices



### FOIL MODIFICATIONS EXPAND VERSATILITY

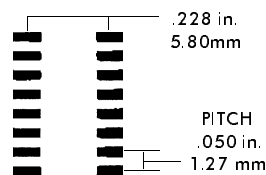
Typical of many Surfboards are large pad areas which may be modified to create additional part mounting zones or expand layout or connection options.

- 1: Score foil with sharp razor to define new zone.
- 2: Apply heat with iron to delaminate foil section.
- 3: New mounting zone has been created.
- 4: Solder component to new mounting zone.

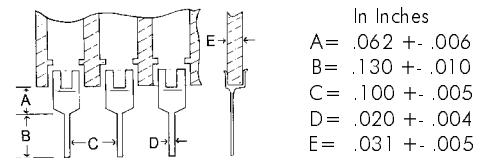


### JUST ADD PARTS AND PLUG IN™

I.C. FOOTPRINT  
accepts one 14 or  
16-pin SOIC,  
or two 8-pin SOICs.



### PIN SPECIFICATIONS / TOLERANCES



### BOARD SPECIFICATIONS

**BOARD MATERIAL:** .031 ± .005 In. Thick G-10 FR-4 Glass Epoxy or equivalent.  
**CIRCUITS:** 1oz Copper with solder coated pads.  
**TOLERANCES:** Given in inches  
Board Size ± .020 / OAL ± .040  
Circuit pattern/position ± .005

The 9163 provides direct pin-out of I.C. to SIP pins. If desired, components can be mounted across adjoining circuits, straddle mounted, or new mounting zones can be created in the large circuit foils. The large foils provide space for significant modifications or addition of jumpers if needed. The finished prototype of sub-assembly can be plugged into a solderless breadboard or socket, or soldered into a conventional breadboard.

Copyright 1997, 1999 by Capital Advanced Technologies, Inc. All rights reserved. Surfboards Are a registered trademark of Capital Advanced technologies, Inc. All other trademarks or registered trademarks are property of their respective owners. Availability, specifications, and prices are subject to change without notice. All information given is believed to be accurate but is not guaranteed. The user of information given or products represented by such information is responsible for determining the suitability of said information or products for a given purpose.

**CAPITAL ADVANCED TECHNOLOGIES, INC.**

CAROL STREAM, ILLINOIS, USA.

PHONE 630-690-1696 WWW.CapitalAdvanced.Com FAX-ON-DEMAND 630-690-2865